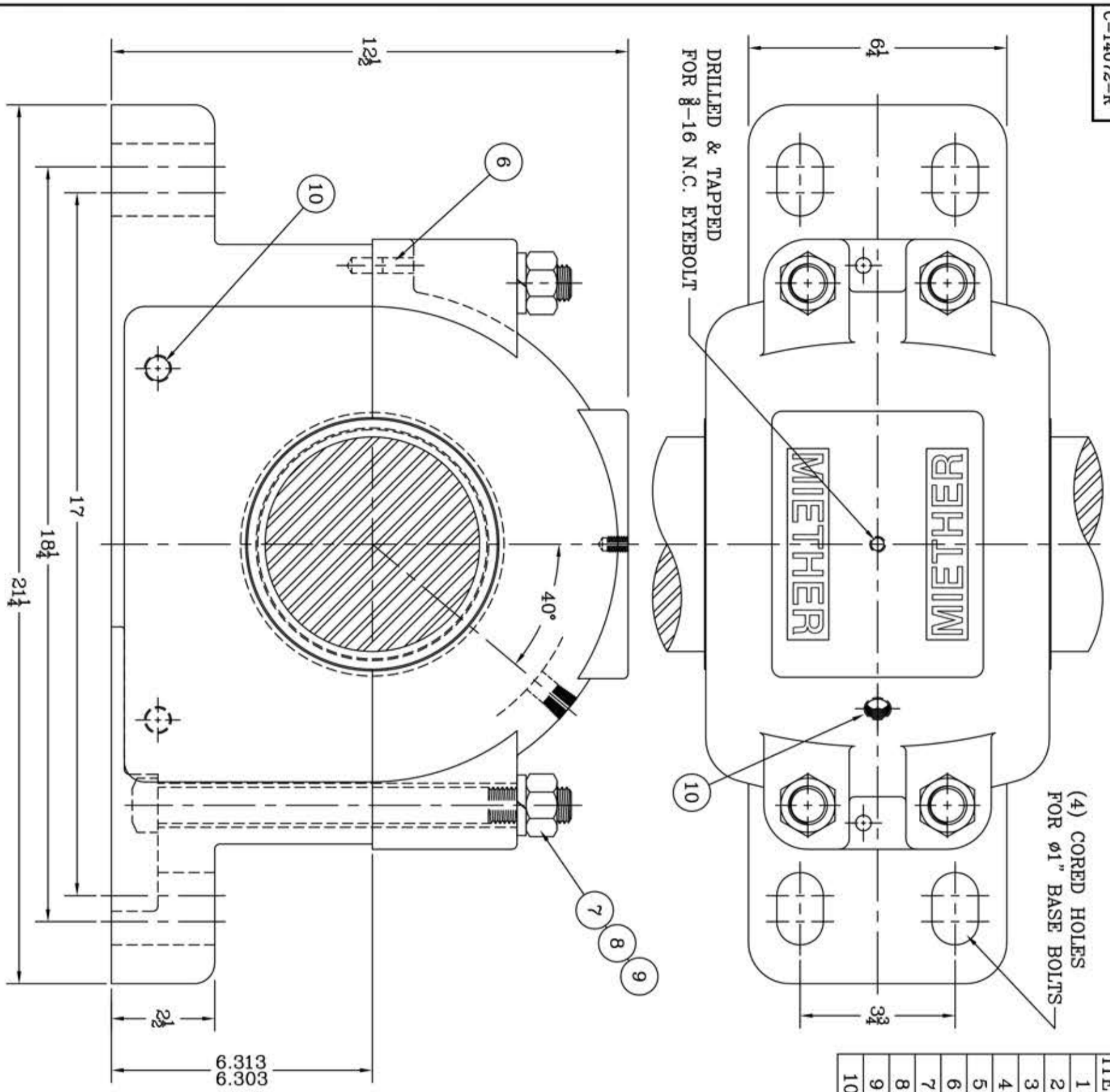


This drawing is the sole property of Miether Bearing Products and contains confidential and proprietary information. It is being provided to you for your use and may not be disclosed to any third party or used for any other purpose without Miether's prior written consent. The [materials] must be returned to the Company upon its demand. Your acceptance of these materials constitutes your acceptance of the foregoing terms.

C-14072-R



(4) CORED HOLES FOR Ø1" BASE BOLTS

DRILLED & TAPPED FOR 3/8-16 N.C. EYEBOLT

ITEM	DESCRIPTION	DETAIL	REQUIRED
1	HOUSING SAF 530 05-03	C-18047-R	1 1
2	SPHERICAL ROLLER BEARING	22230K/W-33	1 1
3	STABILIZING RING SR-30-0	A-10607	1 0
4	ADAPTER SNW-30 05-03	24440	1 1
5	TRIPLE SEAL RING LER-125	A-10581	2 2
6	DOWEL	Ø8 x 3/4 LONG	2 2
7	CAP BOLT SQUARE HEAD	7/8-9 NC x 10" LONG	4 4
8	CAP BOLT HEX. NUT	7/8-9 NC	4 4
9	LOCKWASHER	7/8 SPLIT MED.	4 4
10	PIPE PLUG	3/8-18 NPT	3 3

REDRAWN FOR CONFORMITY RWB per KAB 2-12-04
 REDRAWN TO SCALE WITH CHANGES per JLL by RWB 1-25-01

REVISIONS

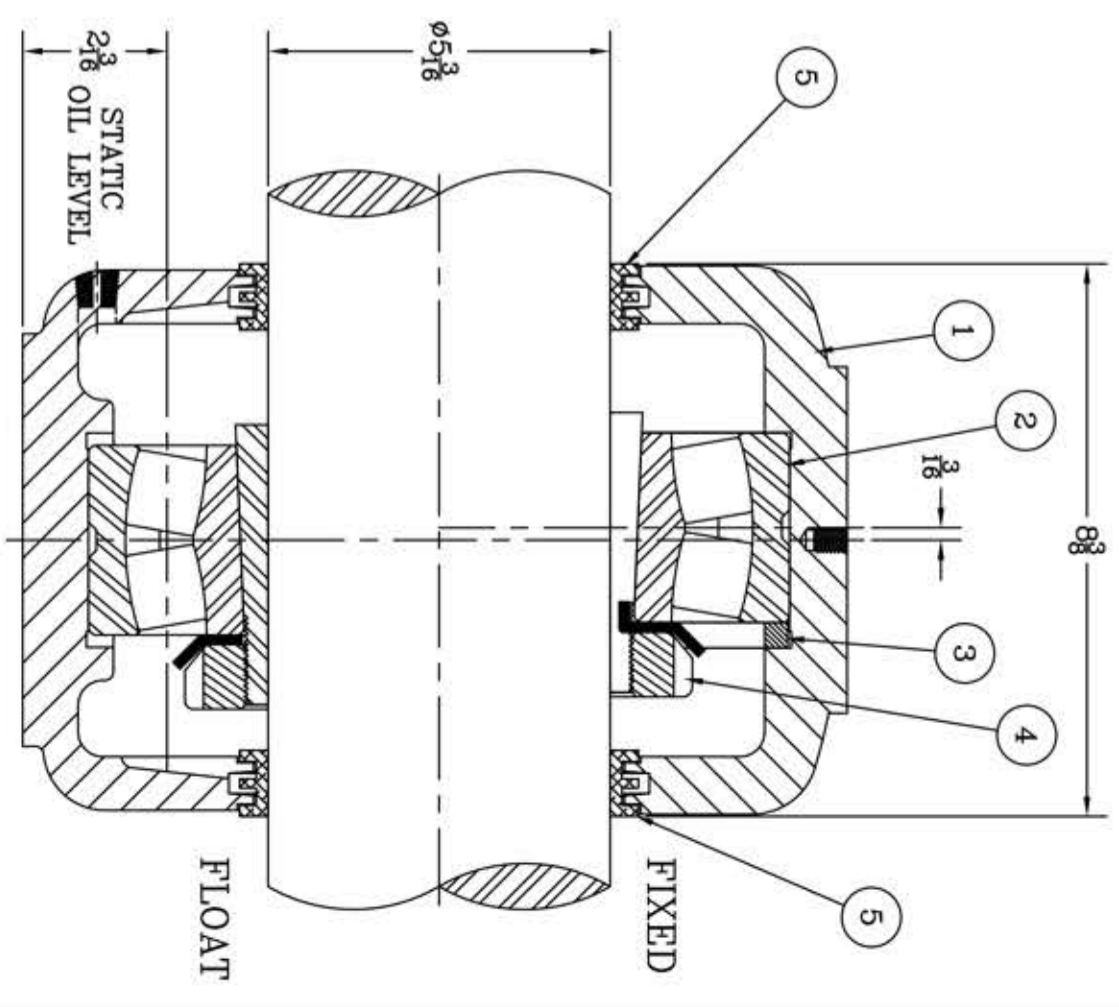
SYMBOL	DESCRIPTION	DATE
C	...	16
D	...	32
E	...	63
F	...	125
G	...	250
J	...	500
K	...	1000

TOLERANCE: UNLESS OTHERWISE SPECIFIED

FRACTIONS ± 1/32" ANGLES ± 0° 30'
 DECIMALS ± .005" WELD ± 1/16"
 CASTING ± 1/16"

A.I.S.I. STANDARD FINISHES

MIETHER BEARING PRODUCTS, INC.
 AN ALCO INDUSTRIES COMPANY
 ODESSA, TX. USA



SCALE	HALF	ASSEMBLY NO.
DRAWN	AW	DRAWING NO.
DATE	5-1-74	C-14072-R
CHK:		